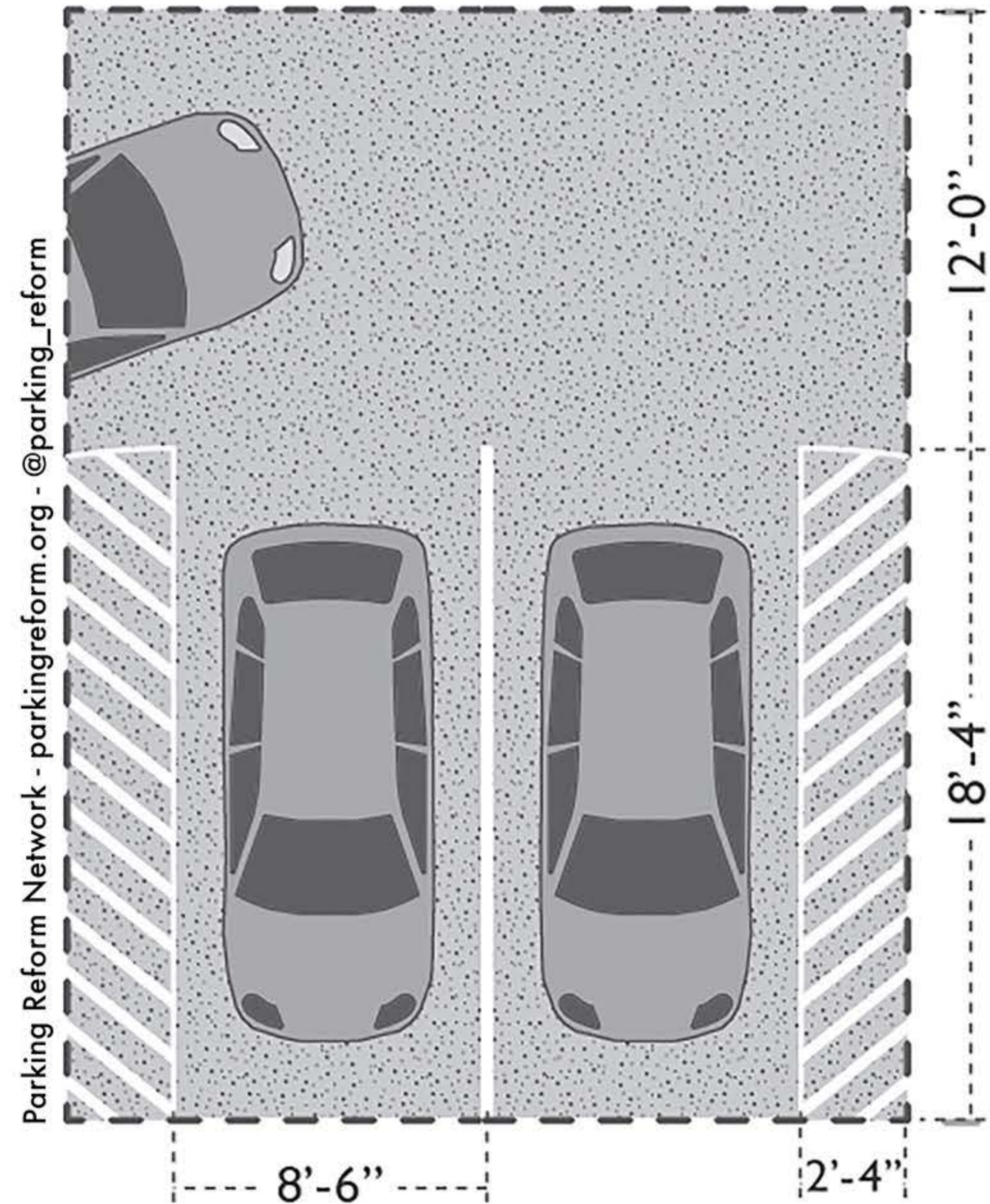
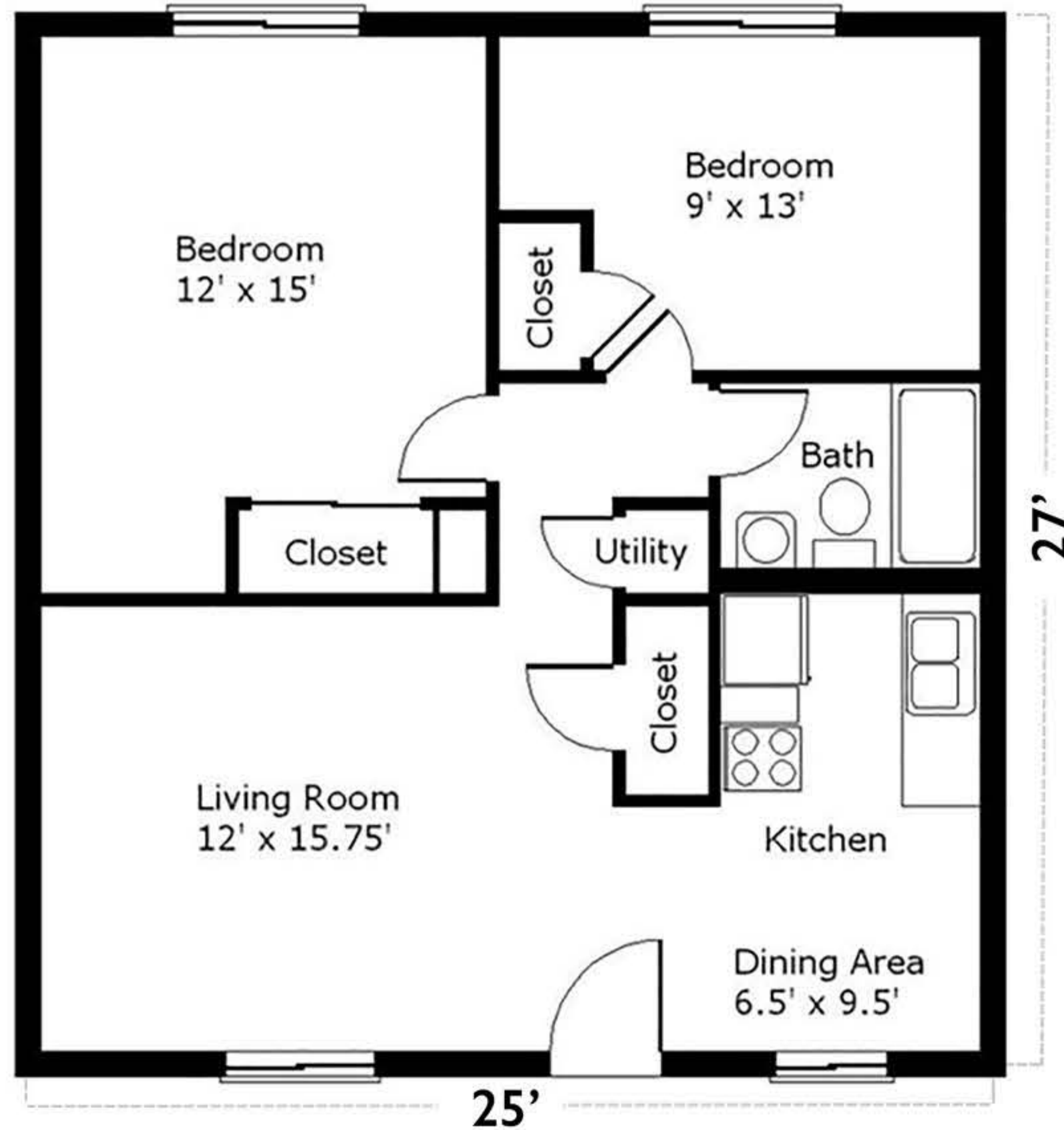


# Living Space Vs. Parking Space



size for 2 bedroom apartment: 675 FT<sup>2</sup>

size for 2 parking spaces: 650 FT<sup>2</sup>

Sources: Transportation Cost and Benefit Analysis II - Parking Costs Victoria Transport Policy Institute ([www.vtpi.org](http://www.vtpi.org))

Graphic Adapted from Graphing Parking (<https://graphingparking.com/2013/07/23/parking-across-cascadia/>)

Image compiled by the Parking Reform Network - <https://parkingreform.org/> - @Parking\_Reform

